



**FORTUNE & COATES**

The People's Estate Agent

<https://www.fortuneandcoates.co.uk>



**35 Copshall Close, Harlow, CM18 7LH**

**Guide price £300,000**

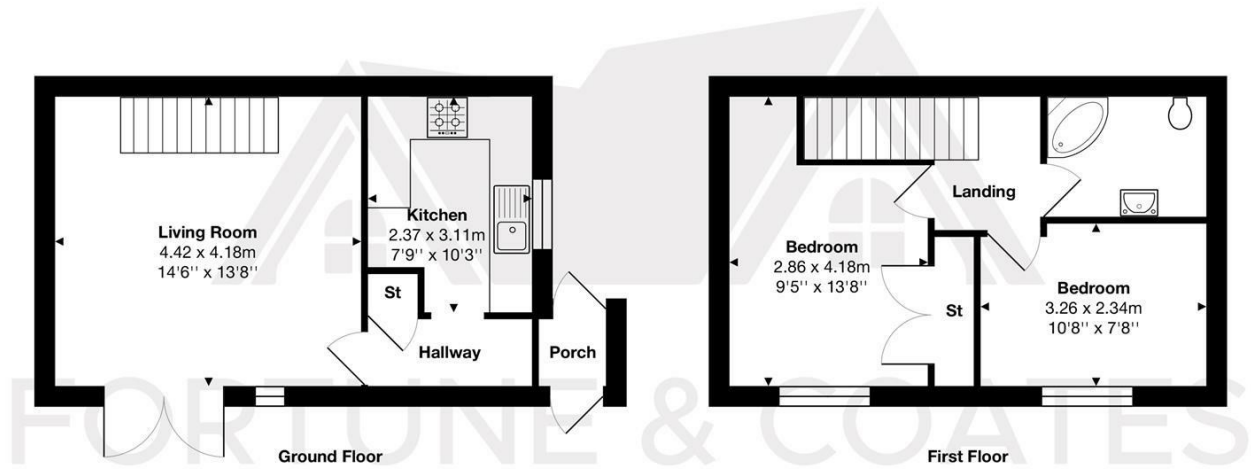
Guide Price: £300,000 - £315,000

Fortune and Coates are pleased to offer to the market this rarely available two-bedroom end of terrace family home situated in the sought-after location of Copshall Close, Harlow.

Presented to a high standard throughout, this wonderful home comprises an inviting entrance porch leading through to the entrance hallway with access to the main living accommodation and a useful storage cupboard.



## Floor Plan

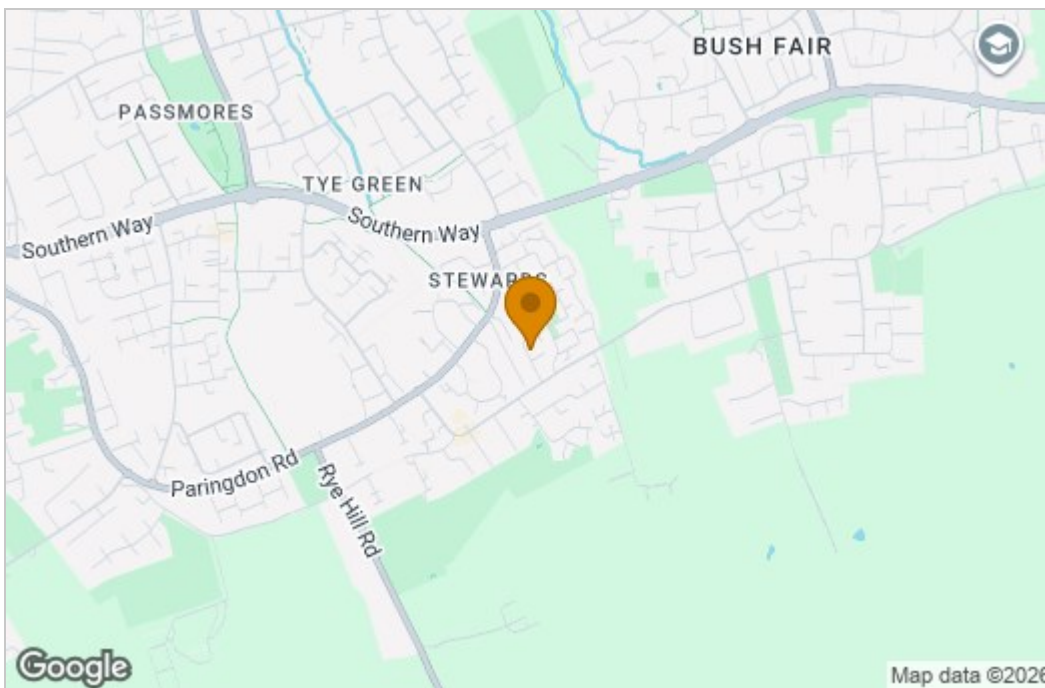


Total Area: approx. 58.6 m<sup>2</sup> ... 630 ft<sup>2</sup>

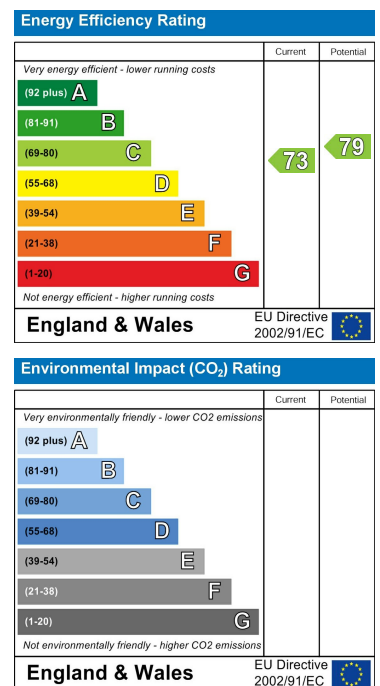
THE FLOORPLAN IS FOR ILLUSTRATIVE PURPOSES ONLY AND IS NOT TO SCALE.  
Measurements and features are approximate and may differ from the actual property. Verify all details independently; no liability is accepted for errors or omissions.

Property marketing provided by [www.fotomarketing.co.uk](http://www.fotomarketing.co.uk)

## Area Map



## Energy Efficiency Graph



These particulars, whilst believed to be accurate are set out as a general outline only for guidance and do not constitute any part of an offer or contract. Intending purchasers should not rely on them as statements of representation of fact, but must satisfy themselves by inspection or otherwise as to their accuracy. No person in this firm's employment has the authority to make or give any representation or warranty in respect of the property.